

# iExplore for iRODS Distributed Data Management

---

**Bing Zhu**  
**Data Intensive Cyber Environments**  
**Institute for Neural Computation**  
**Uni. of California: San Diego**

March 25, 2010  
Chapel Hill, North Carolina



THE UNIVERSITY  
of NORTH CAROLINA  
at CHAPEL HILL



# About iExplore

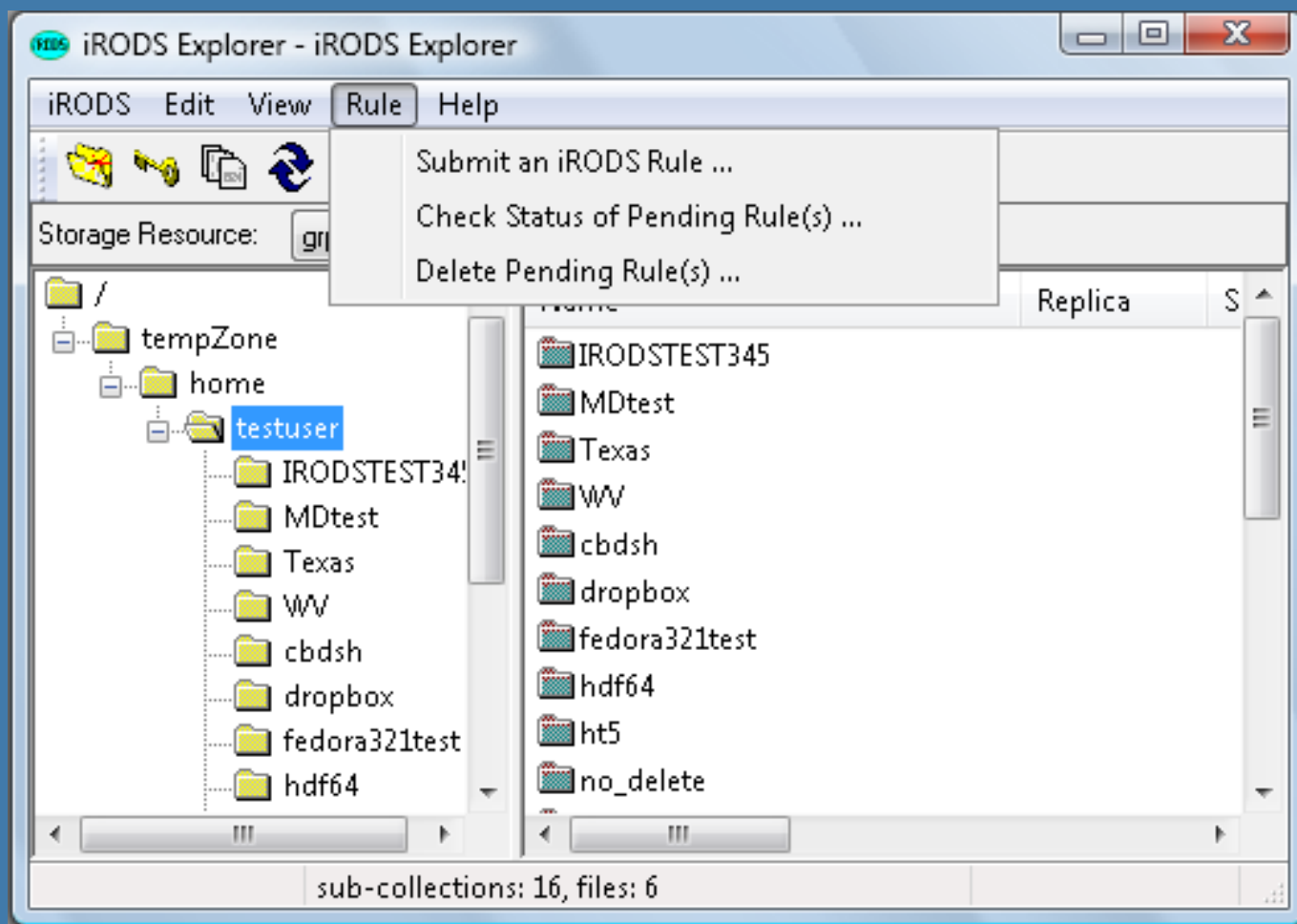
- A graphical user interface client tool
- Designed and implemented in the Windows platform
- Offers a rich set of client functions and dialogs
- Has Excellent performance



THE UNIVERSITY  
of NORTH CAROLINA  
at CHAPEL HILL



# Main Screen



THE UNIVERSITY  
of NORTH CAROLINA  
at CHAPEL HILL



# iExp Functions

---

- Navigation of hierarchical structure
- Uploading files/folders
- Downloading datasets
- Data Replication
- Data Access Control



THE UNIVERSITY  
of NORTH CAROLINA  
at CHAPEL HILL



## iExp Functions (Continued)

- Manipulation of metadata
- Change Password
- iRODS Rules
- User Info
- Storage Info
- Online help



THE UNIVERSITY  
of NORTH CAROLINA  
at CHAPEL HILL



# New Features

---

- Job Progress Indicator
- HTML information display
- Search Function

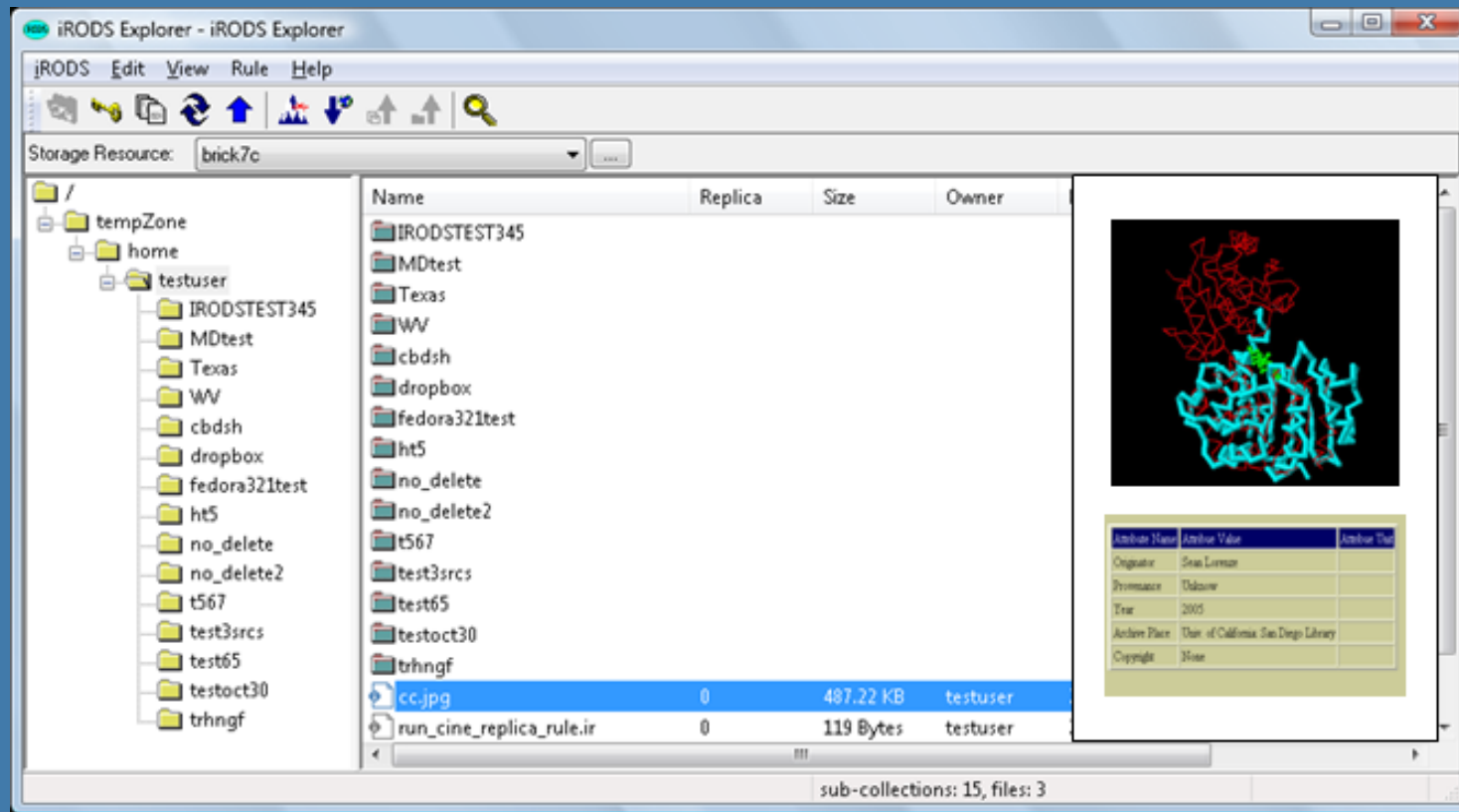


THE UNIVERSITY  
of NORTH CAROLINA  
at CHAPEL HILL



# Proposed Future Development

## A New Main Screen



THE UNIVERSITY  
of NORTH CAROLINA  
at CHAPEL HILL



# Proposed Future Development (Continued)

- Multi-Language Support
- Generic Interface for integration with other software applications
- New Rule Editor
- Advanced Search



THE UNIVERSITY  
of NORTH CAROLINA  
at CHAPEL HILL





# iExplore Development

---

- Questions?
- Suggestions?



THE UNIVERSITY  
of NORTH CAROLINA  
at CHAPEL HILL



## For More Information

iRODS Web Sites:

<http://www.irods.org>

<http://www.diceresearch.org>

iExplore Download:

<https://www.irods.org/index.php/windows>



THE UNIVERSITY  
of NORTH CAROLINA  
at CHAPEL HILL

