

Lifetime Library

iDrop iRODS Client Interface

School of Information and Library Science
University of North Carolina at Chapel Hill

Terrell G. Russell
Michael Conway
Daniel Beaver-Seitz
Frederic Stutzman
Gary Marchionini

Lifetime Relationship

Universities hold a unique role in our society:

- Educate
- Research
- Curate
- Archive
- Connect
- Create Culture
- Inspire

Lifetime Relationship

Universities hold a unique role in our society:

- Educate
- Research
- Curate
- Archive
- Connect
- Create Culture
- Inspire
- Trusted
- Long-Lived
- We each have a sense of ownership

Responsibility

- Current Students
- Alumni
- Current/Former Faculty
- Staff
- Public (sometimes)
- External Researchers
- Future Stakeholders

Lifetime Library

The University should host and manage a lifetime of data for and provide a suite of information services to those affiliated with the University.

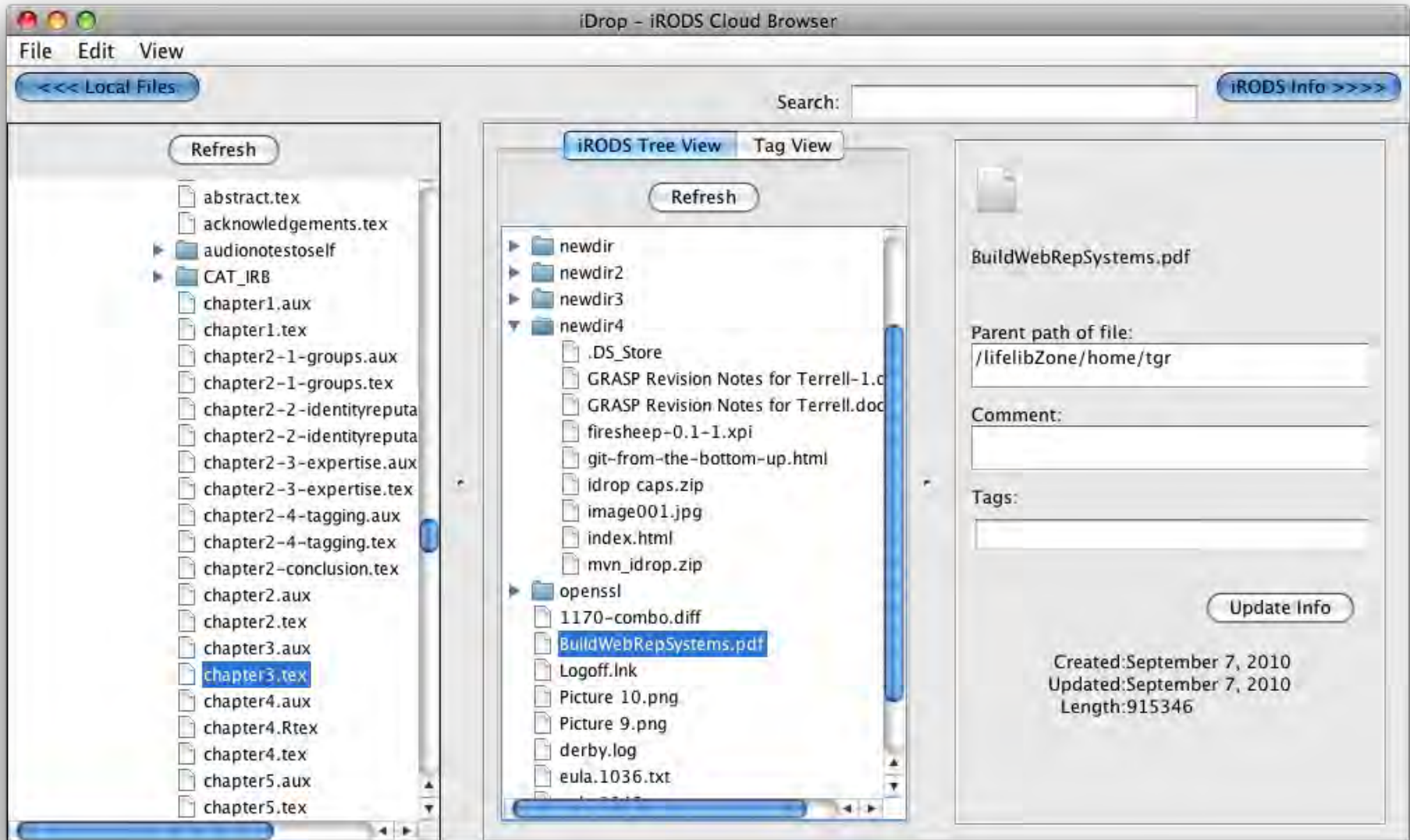
- Safe
 - Replication
 - Migration
- Available
 - Online
 - Multi-Device
- Secure
 - Access Controlled
- Shareable
 - Multi-User

Goals

We want to provide services for the University community including:

- Ingest
- Access / Management
- Organization
- Search
- Export
- Archive
- Portability

Main Window



Transfer Window

The screenshot shows the iDrop Transfer Client interface. At the top, there is a menu bar with 'File', 'Edit', and 'View'. Below the menu bar is a toolbar with buttons for 'Purge All', 'Purge Successful', 'Delete Selected', 'Cancel Selected', 'Restart selected transfer', 'Resubmit Selected', 'Refresh View', and 'Auto Refresh View'. The main area displays a table of recent transfer activity:

Start Date	Status	Error Status	Operation	Source	Destination
Feb 16, 2011	COMPLETE	OK	PUT	/Users/trel/Documents/mevi...	/lifelibZone/home/tgr
Feb 16, 2011	COMPLETE	OK	PUT	/Users/trel/Documents/mevi...	/lifelibZone/home/tgr
Feb 16, 2011	COMPLETE	OK	PUT	/Users/trel/Documents/oasis...	/lifelibZone/home/tgr
Feb 16, 2011	COMPLETE	OK	PUT	/Users/trel/Documents/mevi...	/lifelibZone/home/tgr

Below the table, there are two tabs: 'TransferSummary' (selected) and 'Transfer Details'. The 'TransferSummary' tab shows the following information:

- Transfer Status: COMPLETE
- Error Status: OK
- Transfer Date: 2011-02-16 12:46:58....
- Transfer Type: PUT
- Source Path: /Users/trel/Documents/oasis_application2.pdf
- Destination Path: /lifelibZone/home/tgr
- Last successful transfer: /Users/trel/Documents/oasis_application2.pdf

At the bottom, there is a progress bar showing 'Transferred 1 out of 1' and an 'Error messages' section with a scrollable text area.

Status

- Current interface available to ~20 SILS students
 - Increase to ~50 by end of semester
 - Increase to ~1000 by next year
 - Then all UNC students
- Implementing “Watch” Folder
 - Automatic Syncing
 - No direct manipulation